

**GCG Antibody (N-term)**  
**Purified Rabbit Polyclonal Antibody (Pab)**  
**Catalog # AP6515A**

**Specification**

---

**GCG Antibody (N-term) - Product Information**

Application	IHC-P, FC, WB,E
Primary Accession	<a href="#">P01275</a>
Reactivity	Human, Mouse
Host	Rabbit
Clonality	Polyclonal
Isotype	Rabbit IgG
Calculated MW	20909
Antigen Region	25-54

**GCG Antibody (N-term) - Additional Information**

**Gene ID** 2641

**Other Names**

Glucagon, Glicentin, Glicentin-related polypeptide, GRPP, Oxyntomodulin, OXM, OXY, Glucagon, Glucagon-like peptide 1, GLP-1, Incretin hormone, Glucagon-like peptide 1(7-37), GLP-1(7-37), Glucagon-like peptide 1(7-36), GLP-1(7-36), Glucagon-like peptide 2, GLP-2, GCG

**Target/Specificity**

This GCG antibody is generated from rabbits immunized with a KLH conjugated synthetic peptide between 25-54 amino acids from the N-terminal region of human GCG.

**Dilution**

IHC-P~~1:10~50

FC~~1:10~50

WB~~1:1000

E~~Use at an assay dependent concentration.

**Format**

Purified polyclonal antibody supplied in PBS with 0.09% (W/V) sodium azide. This antibody is prepared by Saturated Ammonium Sulfate (SAS) precipitation followed by dialysis against PBS.

**Storage**

Maintain refrigerated at 2-8°C for up to 2 weeks. For long term storage store at -20°C in small aliquots to prevent freeze-thaw cycles.

**Precautions**

GCG Antibody (N-term) is for research use only and not for use in diagnostic or therapeutic procedures.

**GCG Antibody (N-term) - Protein Information**

**Name** GCG ([HGNC:4191](#))

**Function** [Glucagon]: Plays a key role in glucose metabolism and homeostasis. Regulates blood glucose by increasing gluconeogenesis and decreasing glycolysis. A counterregulatory hormone of insulin, raises plasma glucose levels in response to insulin-induced hypoglycemia. Plays an important role in initiating and maintaining hyperglycemic conditions in diabetes.

**Cellular Location**  
Secreted.

**Tissue Location**

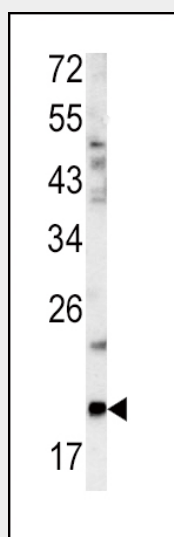
[Glucagon]: Secreted in the A cells of the islets of Langerhans. [Glucagon-like peptide 2]: Secreted from enteroendocrine cells throughout the gastrointestinal tract. Also secreted in selected neurons in the brain [Oxyntomodulin]: Secreted from enteroendocrine cells throughout the gastrointestinal tract

**GCG Antibody (N-term) - Protocols**

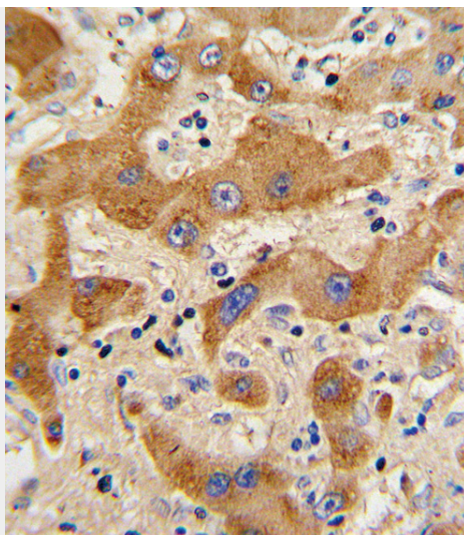
Provided below are standard protocols that you may find useful for product applications.

- [Western Blot](#)
- [Blocking Peptides](#)
- [Dot Blot](#)
- [Immunohistochemistry](#)
- [Immunofluorescence](#)
- [Immunoprecipitation](#)
- [Flow Cytometry](#)
- [Cell Culture](#)

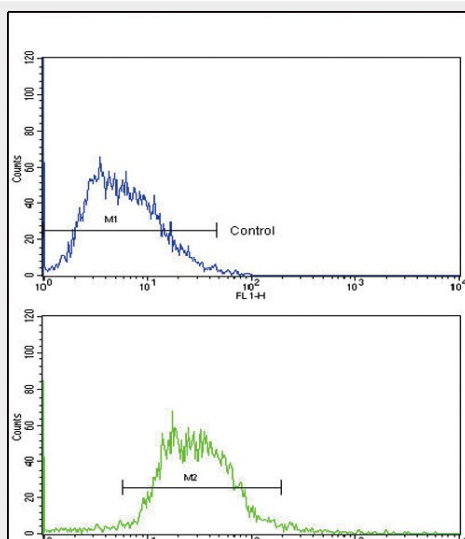
**GCG Antibody (N-term) - Images**



Western blot analysis of GCG antibody (N-term) (Cat.# AP6515a) in mouse bladder tissue lysates (35ug/lane). GCG (arrow) was detected using the purified Pab.



Formalin-fixed and paraffin-embedded human hepatocarcinoma reacted with GCG Antibody (N-term), which was peroxidase-conjugated to the secondary antibody, followed by DAB staining. This data demonstrates the use of this antibody for immunohistochemistry; clinical relevance has not been evaluated.



Flow cytometric analysis of HepG2 cells using GCG Antibody (N-term)(bottom histogram) compared to a negative control cell (top histogram). FITC-conjugated goat-anti-rabbit secondary antibodies were used for the analysis.

### **GCG Antibody (N-term) - Background**

GCG is actually a preproprotein that is cleaved into four distinct mature peptides. One of these, glucagon, is a pancreatic hormone that counteracts the glucose-lowering action of insulin by stimulating glycogenolysis and gluconeogenesis. Glucagon is a ligand for a specific G-protein linked receptor whose signalling pathway controls cell proliferation. Two of the other peptides are secreted from gut endocrine cells and promote nutrient absorption through distinct mechanisms. Finally, the fourth peptide is similar to glicentin, an active enteroglucagon.

### **GCG Antibody (N-term) - References**

Jacobo,S.M., J. Pharmacol. Exp. Ther. 330 (1), 283-293 (2009)  
Root-Bernstein,R.J. Mol. Recognit. 22 (3), 177-187 (2009)